



OMS Osprey
(ex. Louisiana Responder)

OMS Raven
(ex. Texas Responder)

OMS Falcon
(ex. Mississippi Responder)



TO LEARN MORE, VISIT:
sansumarine.com

DIRECT CHARTER INQUIRIES TO:
operations@sansumarine.com

Dimensions and Documentation:

- **Length Overall:** 210ft
- **Beam:** 45ft
- **Depth:** 17ft
- **Max Draft:** 14.8ft
- **Min Draft:** 8.10ft
- **Gross Tonnage (ITC):** 1322 GT
- **Gross Registered Tonnage:** 498 GRT
- **Year Built:** 1993
- **Flag:** US
- **Call Sign:** WBO8579
- **Classification:** ABS, ✕A1, ✕AMS, and E / Subchapter I.

Performance and Machinery:

- **Speed (Maximum):** 12.0 kts
- **Cruising Speed:** 10.0 kts
- **Range:** 9600 miles @ 10kts
- **Fuel Consumption:**
 - On Station: 40 GPH
 - Transit (12kts): 100 GPH
 - Standby: 5 GPH
- **Main Engines:** (2) Caterpillar 3512s
- **Main Propulsion:** (2) x 1500 BHP/2
- **Total Horsepower:** 3000HP
- **Bow Thrusters:** (1) Caterpillar 3406TA
- **Generators:** (3) Caterpillar 3406B-T
- **Power Generation:** 480V / 60Hz / 3 Phase, 850 kW total

Capacities and Accommodations:

- **Deck Area:** 4,000 ft²
- **Deck Strength:** 5 tons / m²
- **Fuel Capacity:** 111,236.00 USG
- **Fresh Water Capacity:** 33,344 USG
- **Recovered Oil Capacity:** 173,356 USG / 4,127 bbls
- **Ballast Capacity:** 145,850 USG
- **Total berthing:** 38 persons
 - (2) 1 person staterooms (head ensuite)
 - (4) 2 person staterooms
 - (1) 4 person stateroom
 - (4) 6 person staterooms
 - (1) Dedicated Hospital room

Vessel is also equipped with a **designated command and control center, male and female locker rooms, crew lounge, and enclosed laboratory space.

Special Features and Equipment:

- **Small Boats:**
 - (2) 21ft RHIBs with 130HP Inboard Volvo Penta Diesel Engines
- **Deck Equipment:**
 - 20T Tugger Winch
 - 5T Tugger Winch
 - 10T Capstan
- **Cranes:**
 - (2) AMC MCT-1565 hydraulic cranes.
*38,000lbs SWL @ 10ft

Electronics:

- Furuno NavNet NT RDP-149 radar systems, Furuno FVC-620 depth sounder, Furuno R4 GPS WAAS Navigator, Furuno GP-32, SEA 857 SSB, SEA 222 SSB, 2x Icom M605 VHF, VHF handheld, JRC JHS-182 AIS, CCTV security system, barometer, Young 07210 wind indicator/recorder, loud hailer, Starlink satellite internet dish and terminal.



6T 37x41 Helideck



Launch Well



20T Hydraulic Crane/ Clear Deck



20T Hydraulic Crane



Designated Control Room



Crew Lounge (1)



Crew Lounge (1)



Mess Hall (1)



Mess Hall (2)



Galley



Designated M/F Locker Rooms (1)



Designated M/F Locker Rooms (2)



1 man stateroom



2 man stateroom



4 man stateroom



6 man stateroom (1)



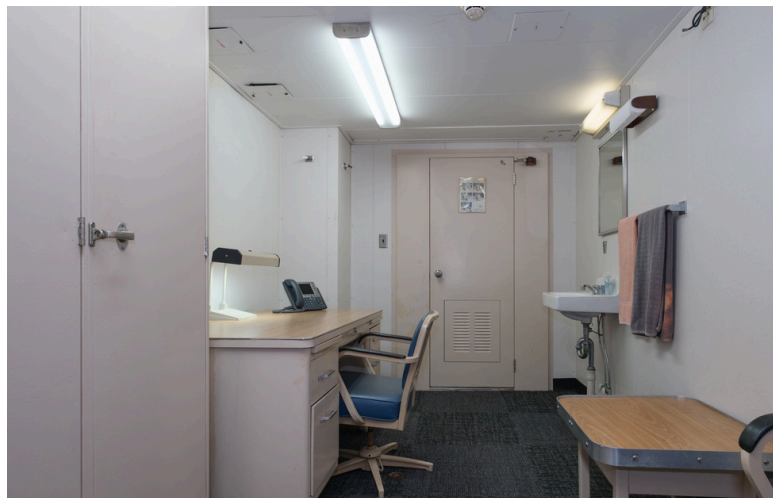
6 man stateroom (2)



Sick Bay (International Voyages)



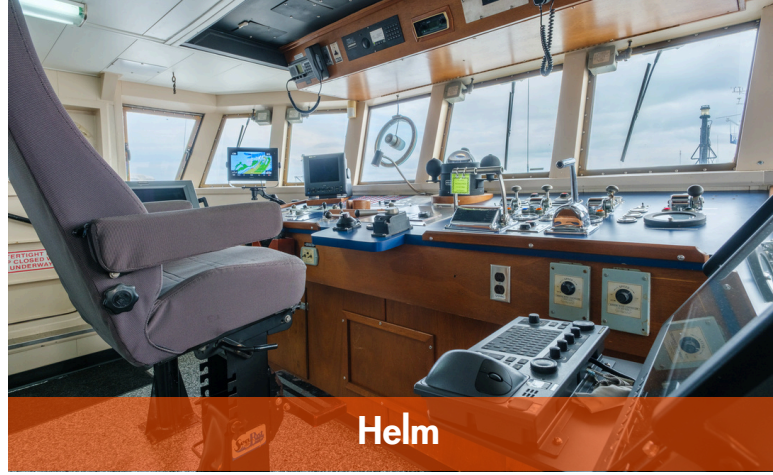
03 Deck Office



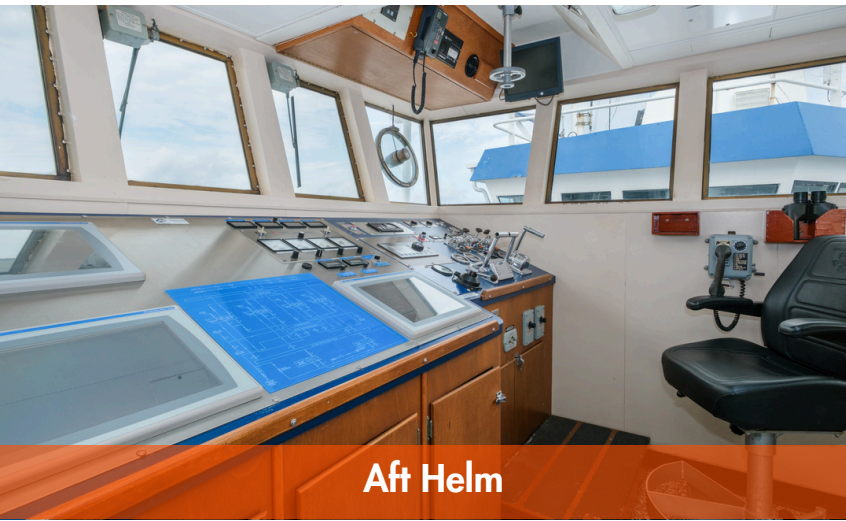
Desk en suite



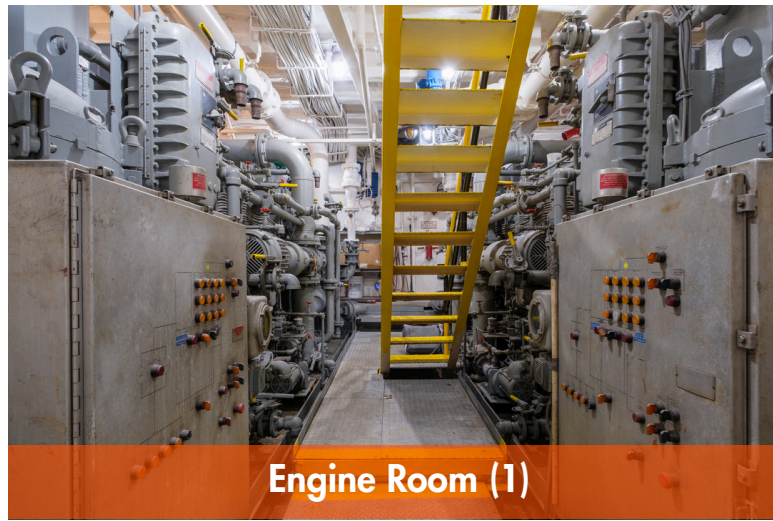
Wheelhouse



Helm



Aft Helm



Engine Room (1)



Engine Room Corridor



Machinery Space



Windlass



02 Deck